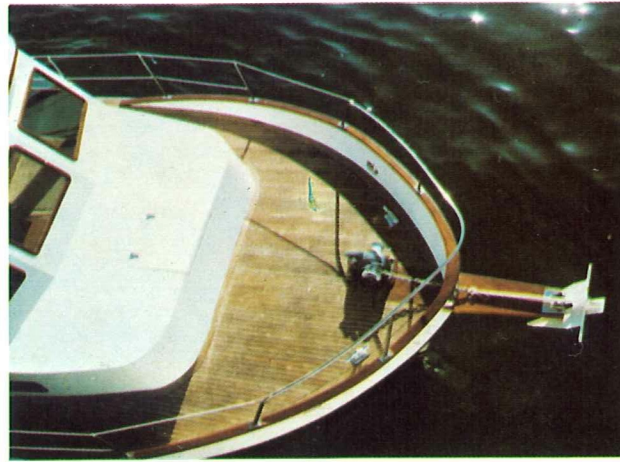


# TRAWLER 35

TRAWLER  
35



NEW TELEPHONE NO.  
3-7437710-5 (6 LINES)

P. O. BOX: 80040 TELEX: HX 56361 CLS

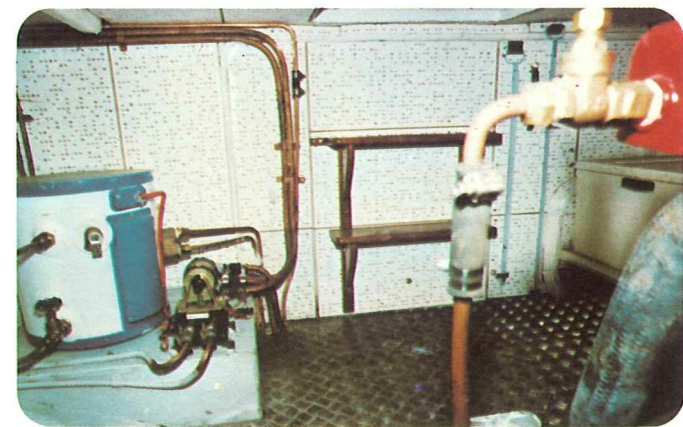
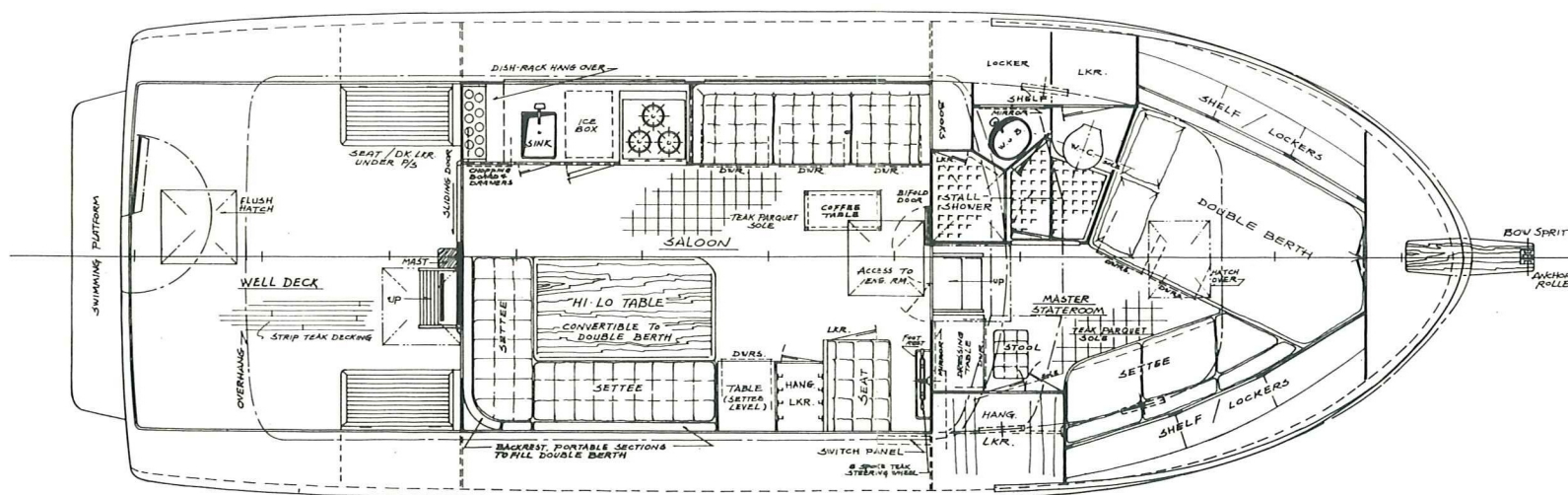
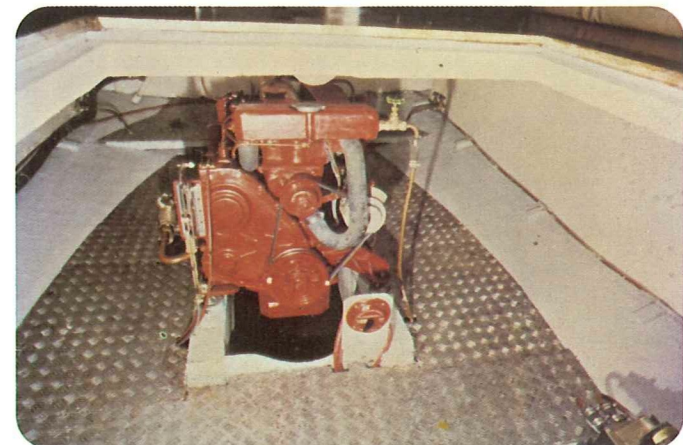
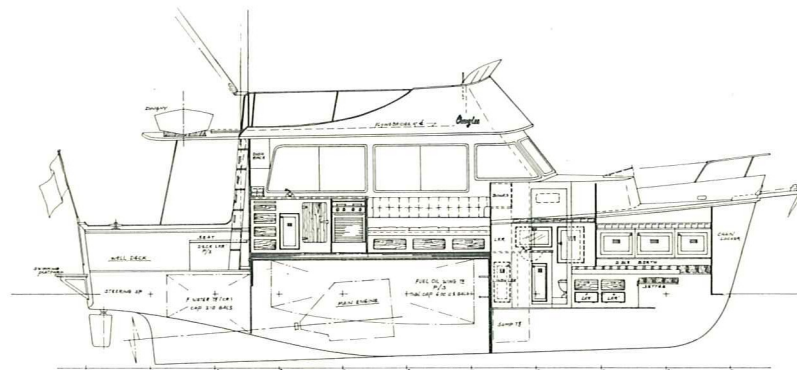
## CHEOY LEE SHIPYARDS, LTD.

863-865, Lai Chi Kok Road, Kowloon, Hong Kong.  
P.O. Box 10040 Cheungshawan, Kowloon, Hong Kong.  
Telephones: 3-716841-4 Telegram: "CHEOYLEE HONGKONG" Telex: HX 86361 CLS



# TRAWLER 35

SPECIFICATIONS:-  
 L.O.A. .... 34'11½"  
 BEAM ..... 12'0"  
 DRAFT ..... 3'7"  
 DISPT. (loaded) .....  
 ..... 21000 lbs.  
 FUEL CAP. . . . . 650 U.S.G.  
 WATER CAP. . . . .  
 ..... 210 U.S.G.  
 CRUISING RANGE:  
 (approx.) at  
 8 Knots - 2700 miles  
 8.6 Knots - 2250 miles  
 10 Knots - 1130 miles



The illustrations and descriptions given in this sheet, which may include certain optional items, are intended as a general guide only, and must not be taken as binding. The Shipyard reserves the right to make, at any moment and without notice, any changes it thinks necessary to improve the craft and its appearance or to meet any requirements of manufacturing or commercial nature.