



LUDERS

36

SLOOP
KETCH
YAWL

CheoyLee®
FINE YACHTS



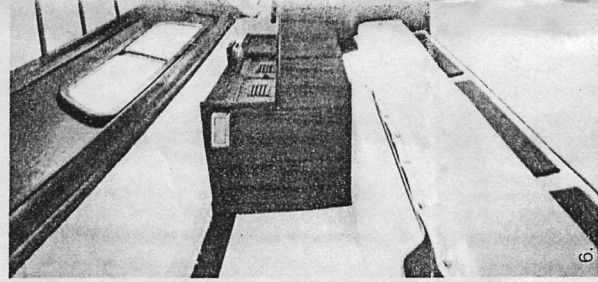
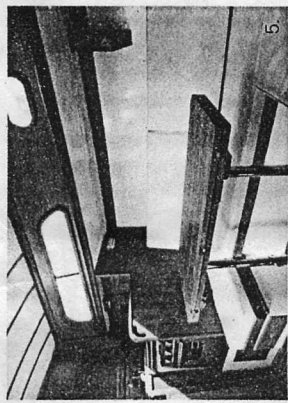
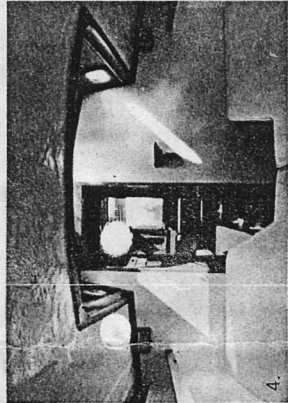
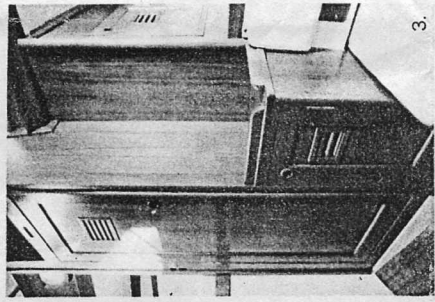
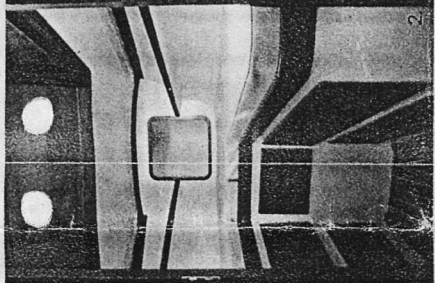
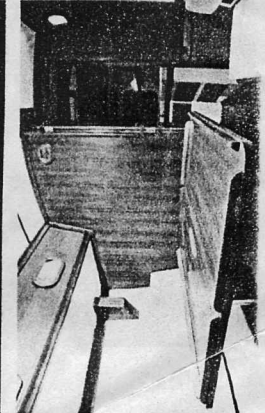
In this model A.E. "Bill" Luders Jr. and CHEOY LEE have combined their respective expertise to produce for you this very versatile 36 footer. With full keel, a refreshing change from the many light fin keel designs, she is ideal for family cruising or even occasional racing where you have a good chance of beating the competition.

Teak is use extensively both inside and out, the same high quality of all CHEOY LEE yachts built to Lloyds Specification. Standard equipment includes Spruce spars with spinnaker pole and roller reefing main boom; stainless steel/chromed bronze deck hardware; bow and stern pulpits and double lifelines; CHEOY LEE stainless steel cheamond bronze winches, to name a few. Auxiliary power is by means of a 25 HP marine diesel engine. There is a choice of two cabin layouts and three sail plans to choose from-sloop, yawl or ketch.

36

**•SLOOP
•KETCH
•YAWL**

DESIGNED BY A.E. "BILL" LUDERS JR. N.A.



THE ILLUSTRATIONS: 1. Saloon starboard side. 4. Fore table open, settee extended. 10. Engine space, plenty of room.

Both cabin layouts offer the possibility of sleeping six people. In plan "A" you have a convertible dinette with "hi-lo" table. When converted this becomes a double berth with the fixed single upper berth and an extendable settee on the opposite side.

Plan "B" provides two fixed single upper berths and two extendable settees with a bulk-head mounted table between.

The "Vee" berth in the forward cabin can have a filler cushion to make up a double berth if required.

